

## **Android min PC RK3066 Recovery Procedures**

This is the procedure for recovery of Android mini PC RK3066. You do this procedure **ONLY WHEN YOU FAIL TO boot the mini PC and have the Android running**. That means you only do it when Android in mini PC has crashed. Otherwise, you just need to do the normal UPGARDE procedure which is much easy to do.

You need to download the RKTool and drivers as well as the firmware.

This recovery procedure involves THREE parts.

The Part 1 is to open the case of mini PC and short circuit the device.

The Part 2 is to install the driver if it is not installed in the first time.

The Part 3 is to connect the mini PC to the PC and install the firmware to the mini PC.

### **Part 1: Open the case of mini PC and short circuit the device.**

#### **Open the case of mini PC**

You can use finger nail to open the case from the side of audio out. Once you hear a click sound, then you can slide the cover to the left a little bit. The whole case will be opened. You can watch video 1 for this step.

#### **Short circuit the device:**

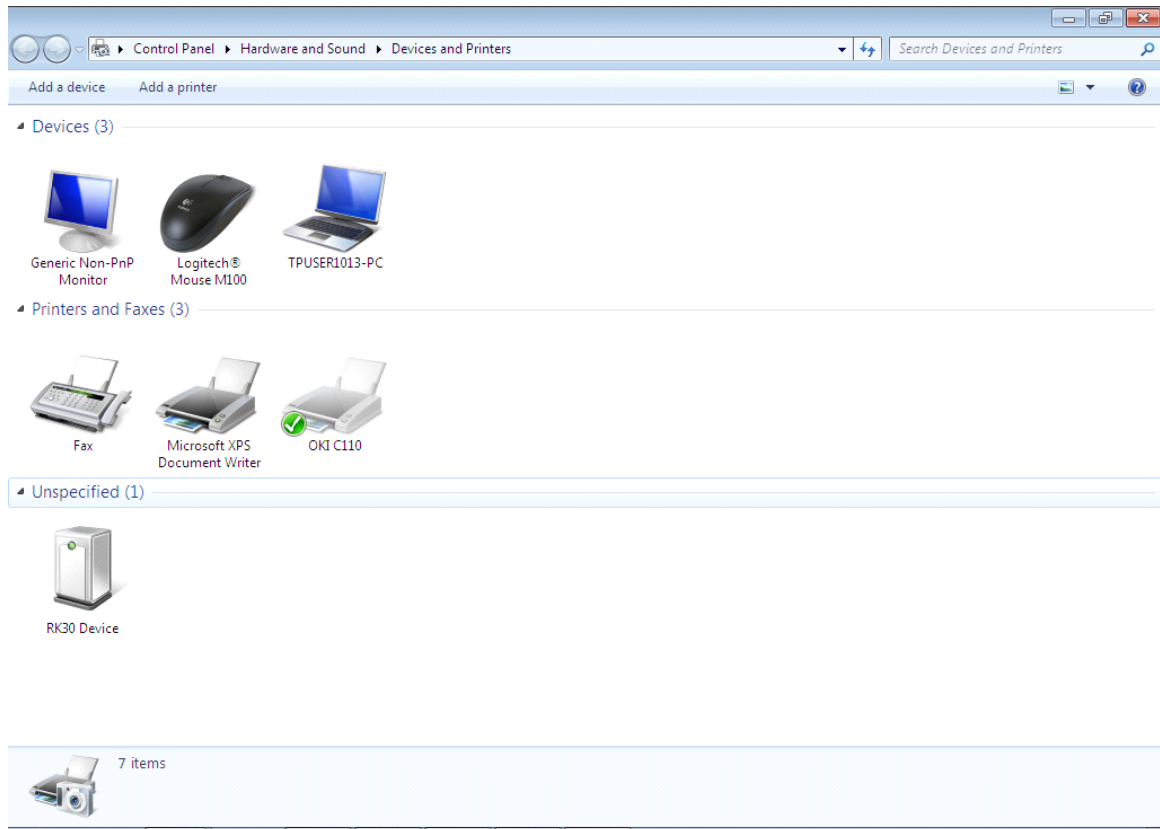
This is the most challenging one, but if you follow the step. It should be fine and fun. You need a sharp object with connectivity. You point this sharp object to the 8<sup>th</sup> and 9<sup>th</sup> pins of the flash. You can count 1 by 1 up to the the 8<sup>th</sup> pin.

You can watch video 2 for this step.

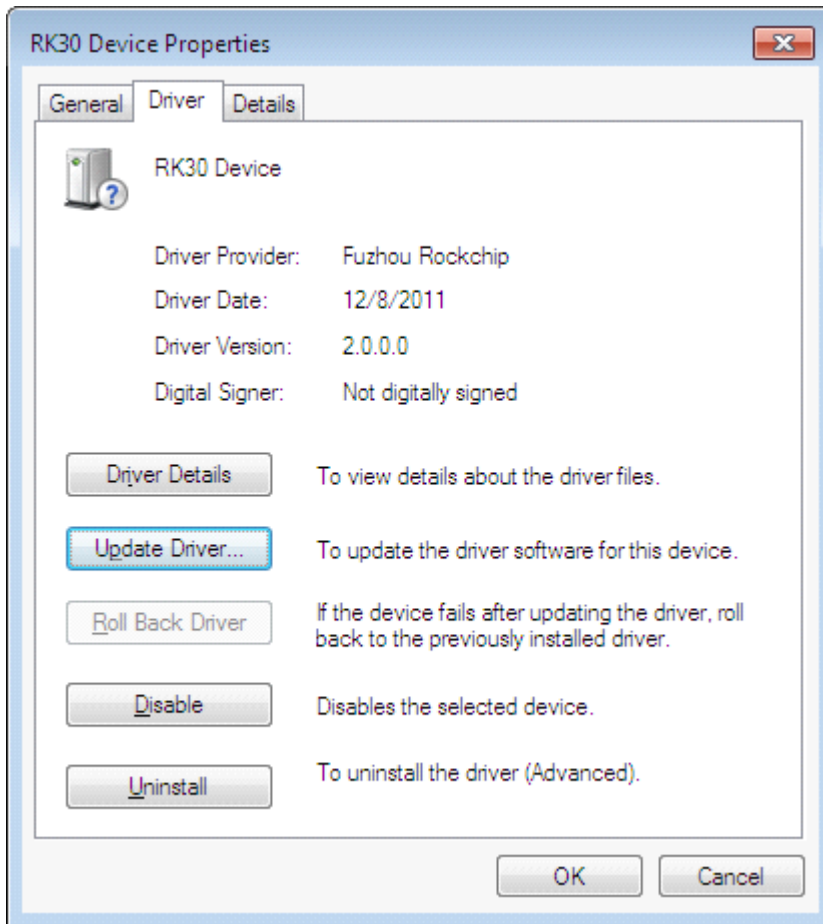
#### **Connect the mini PC to the PC with USB cable:**

You can watch video 3 for this step

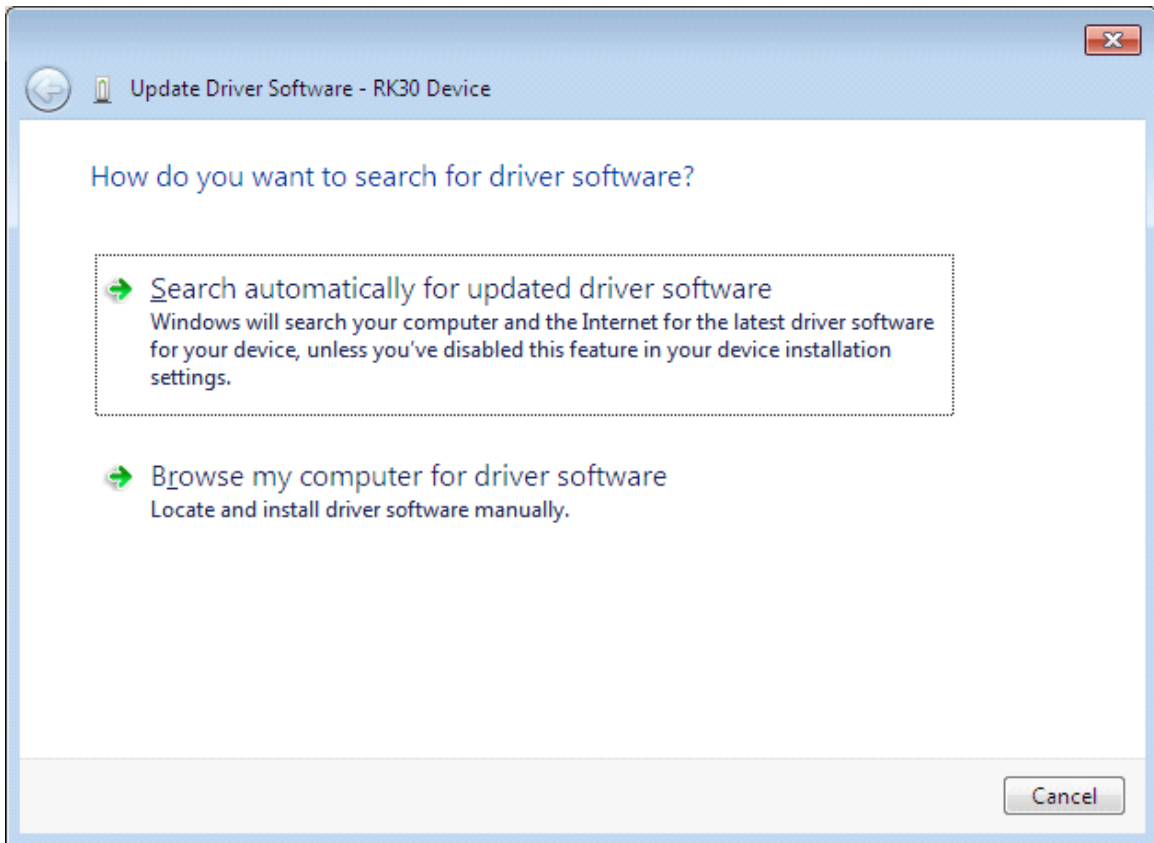
## Part 2: Install the drive if it is the first time.



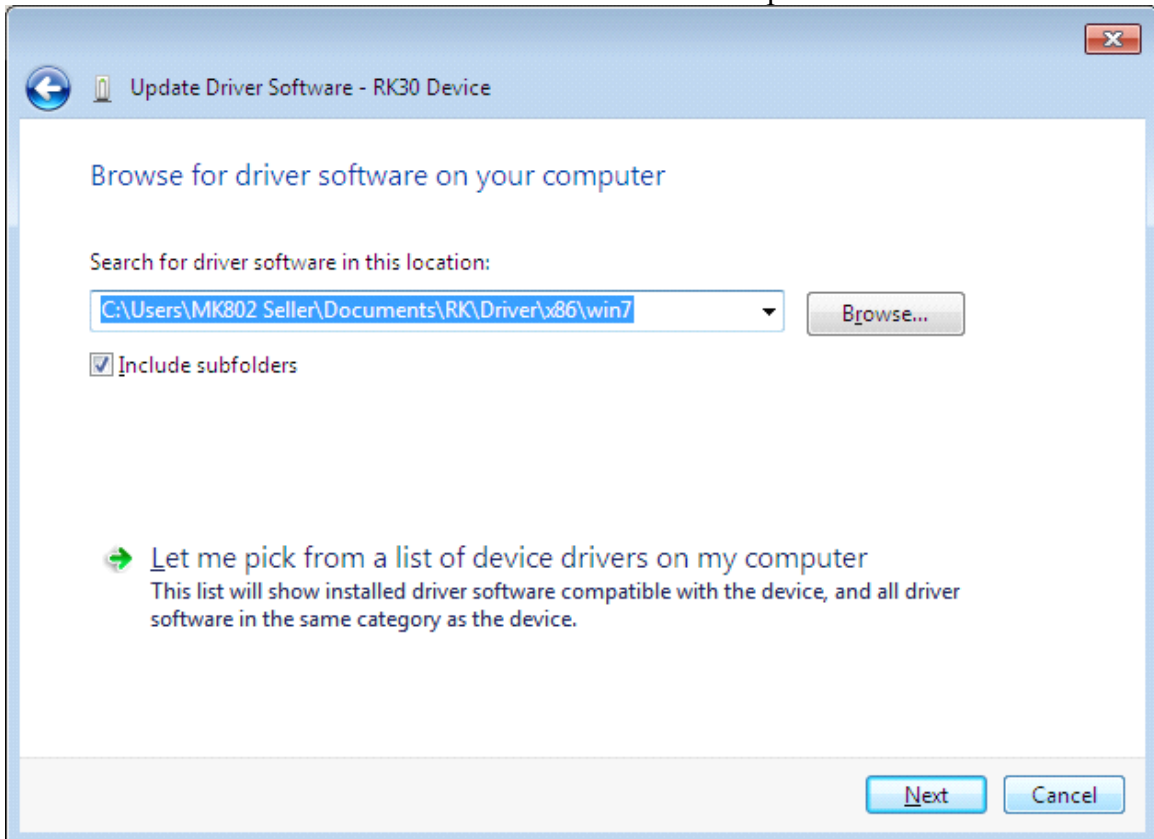
If you short circuit the mini PC then connect it to the PC. You will see there is unspecified device in the device list. You can install the driver for the first time. Right click on the device.



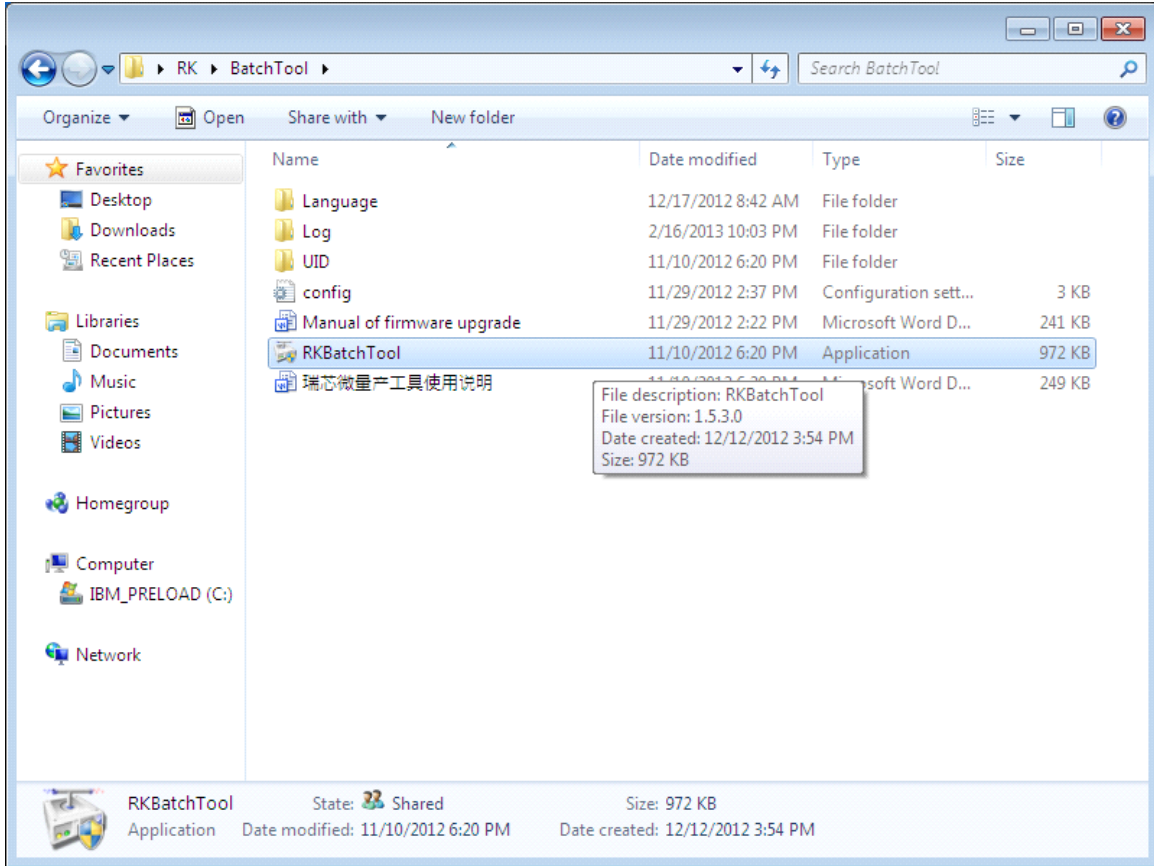
Go to update driver.

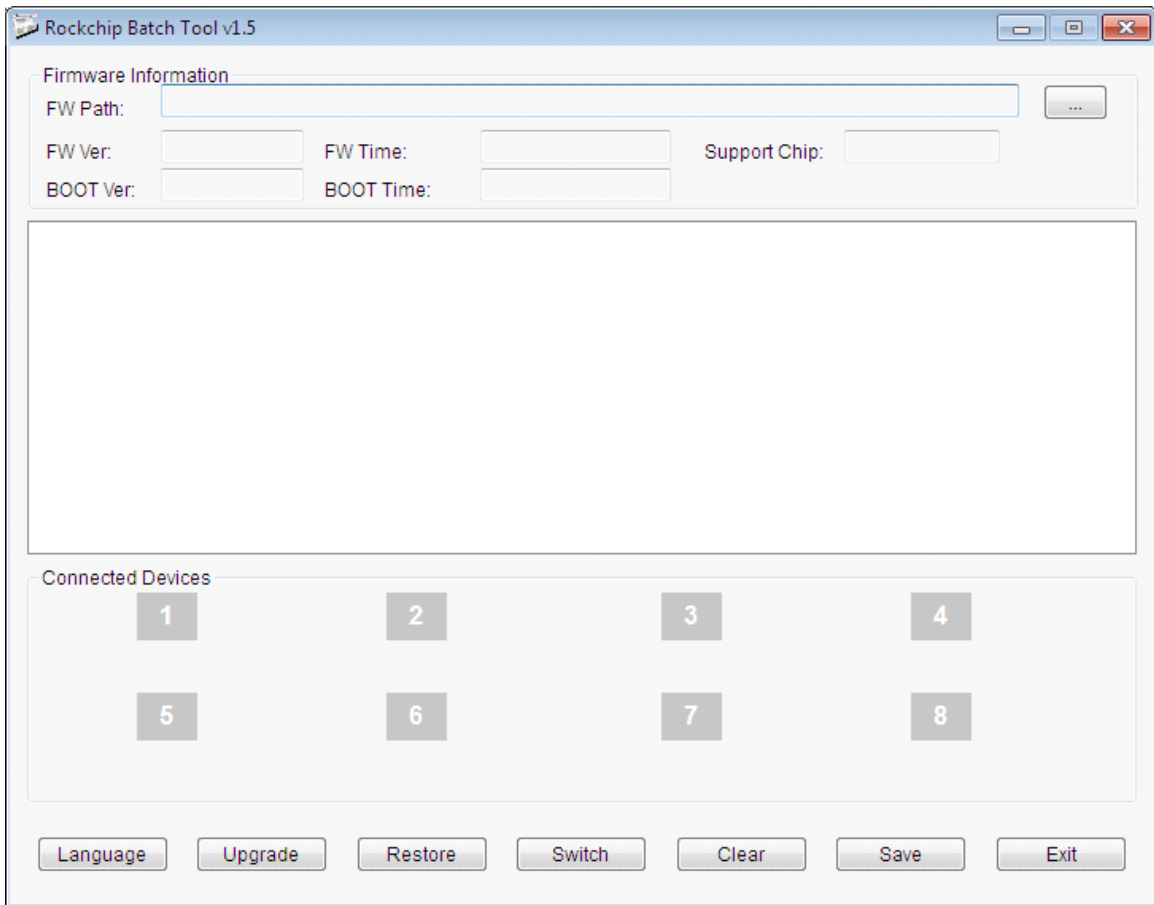


Locate the driver for Windows 7 which is included in the zip files.

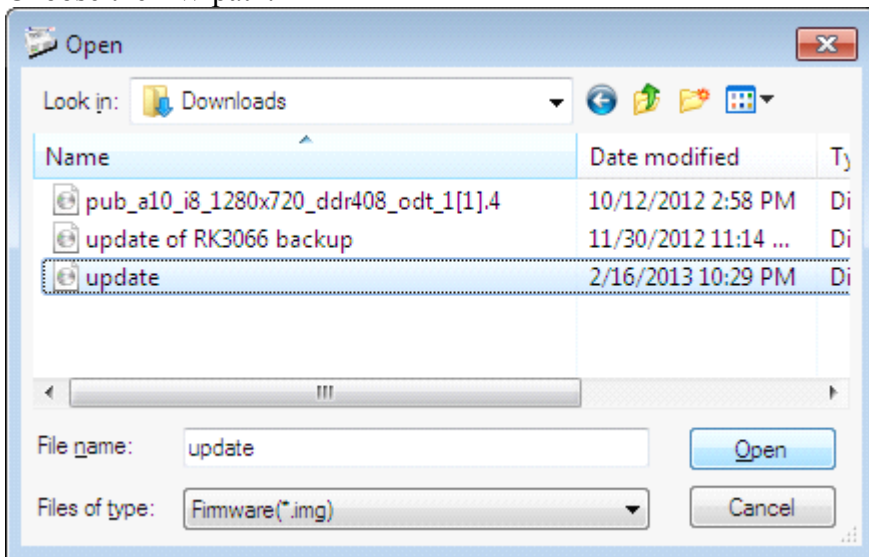


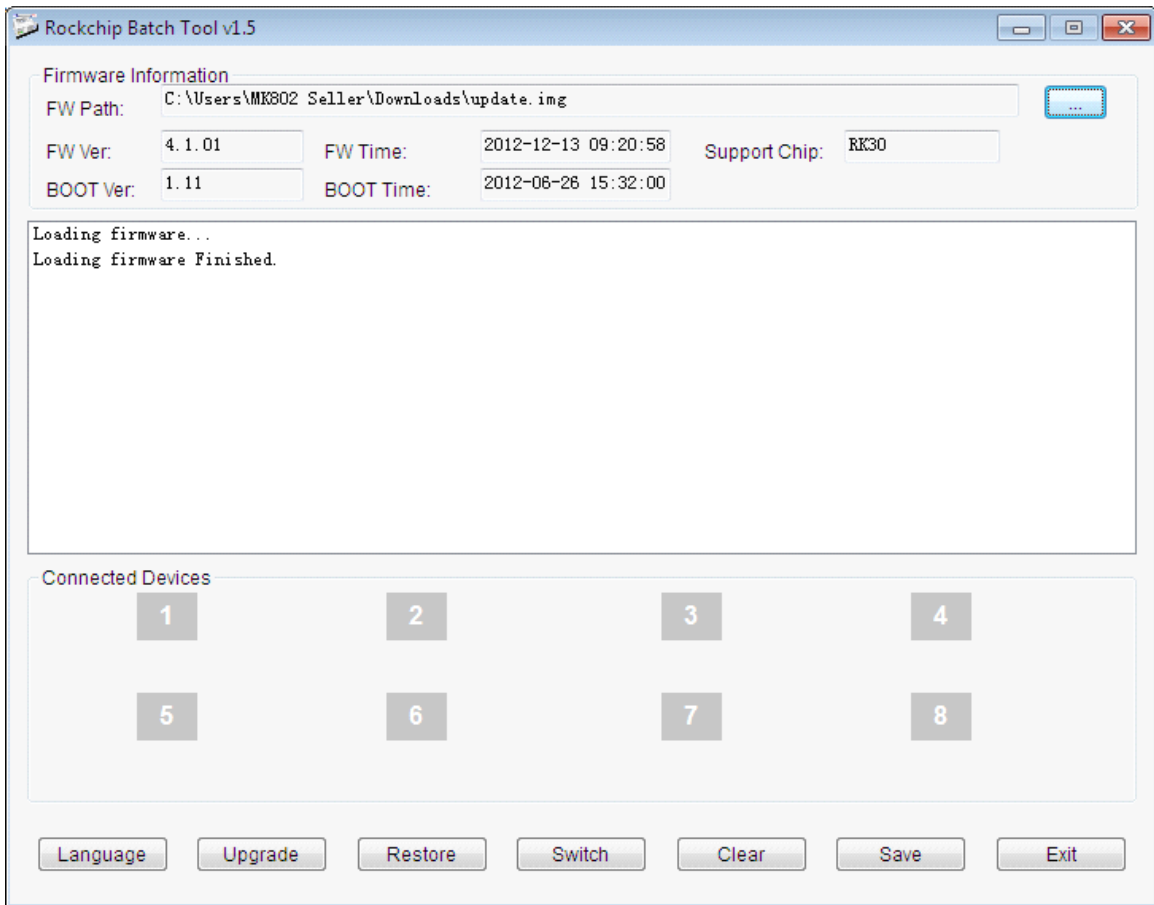
### Part 3: Connect the mini PC to the PC and install the firmware to the mini PC.



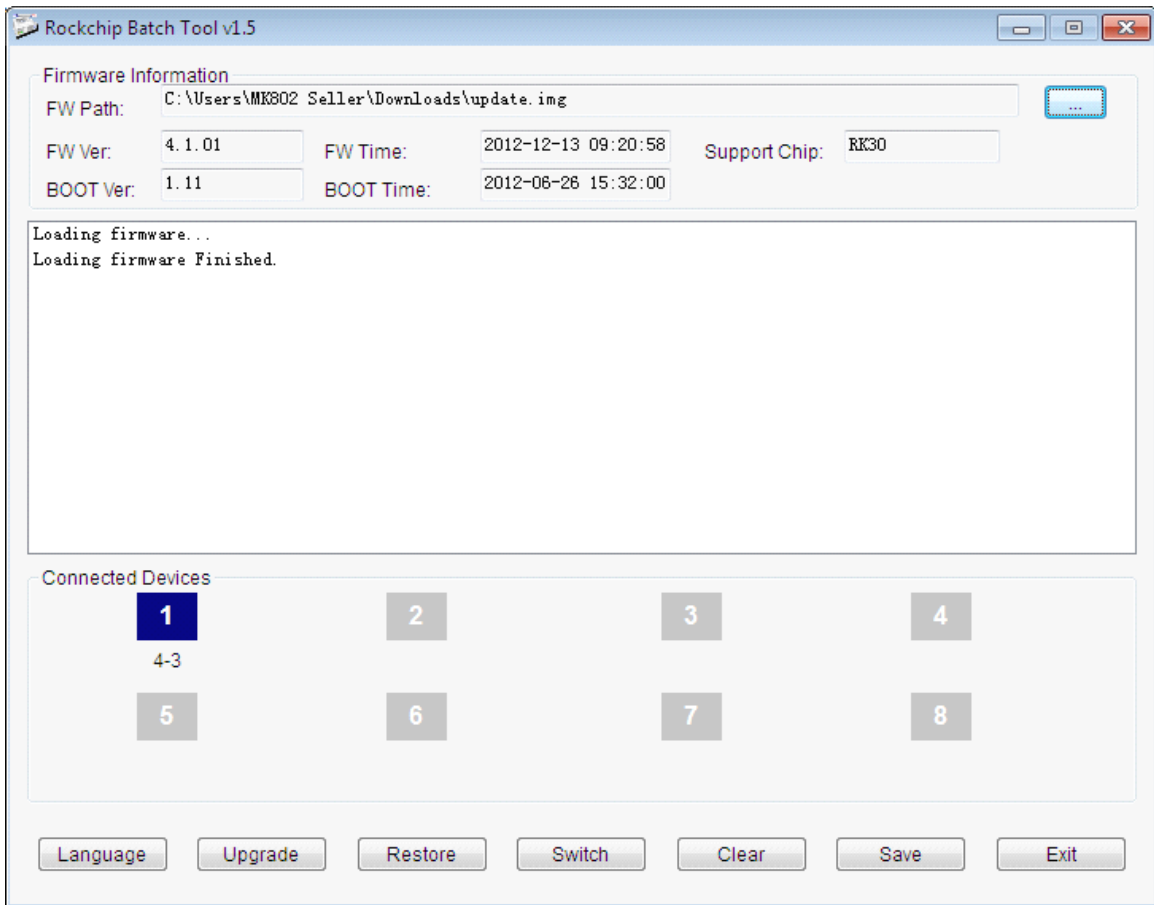


Choose the FW path.





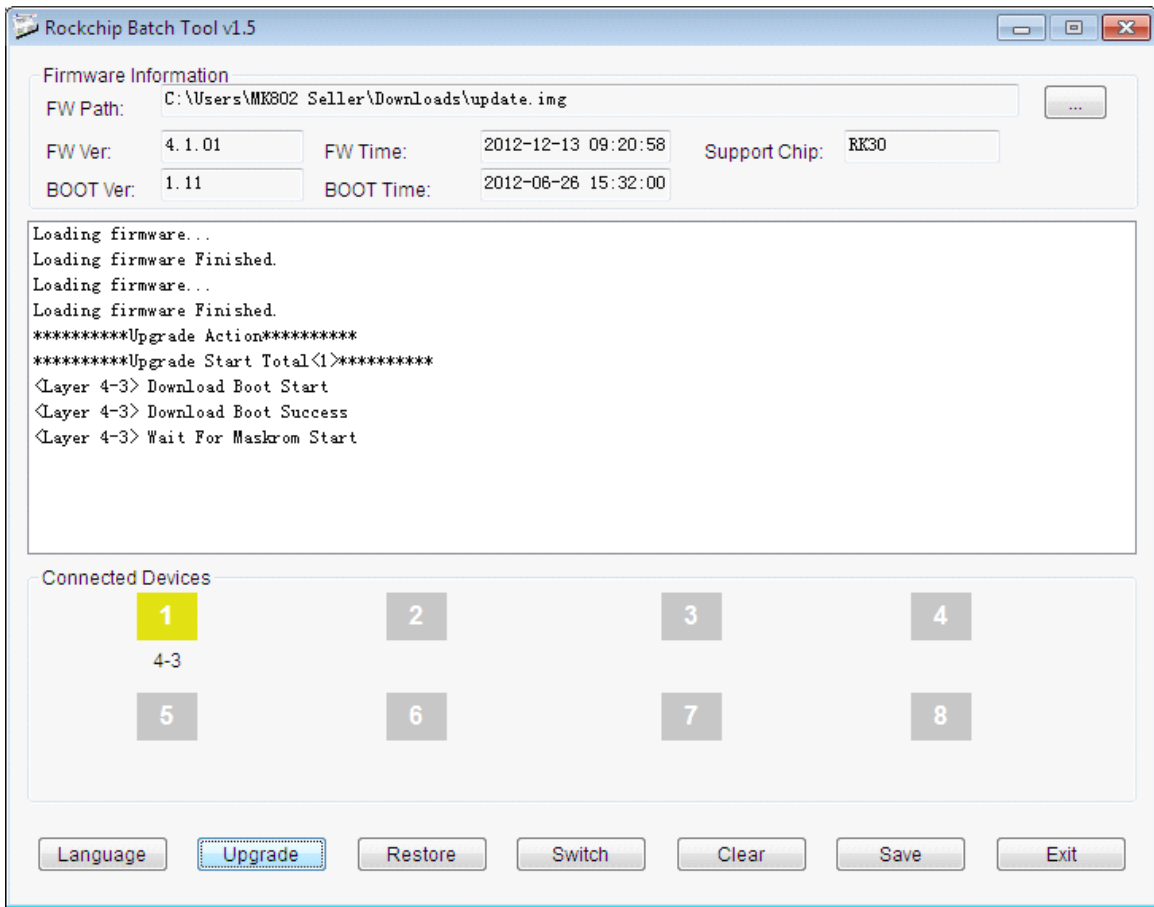
**Once you short circuit the mini PC and connect it to the PC by USB cable.**  
You can watch video video 2 and 3 For this step.



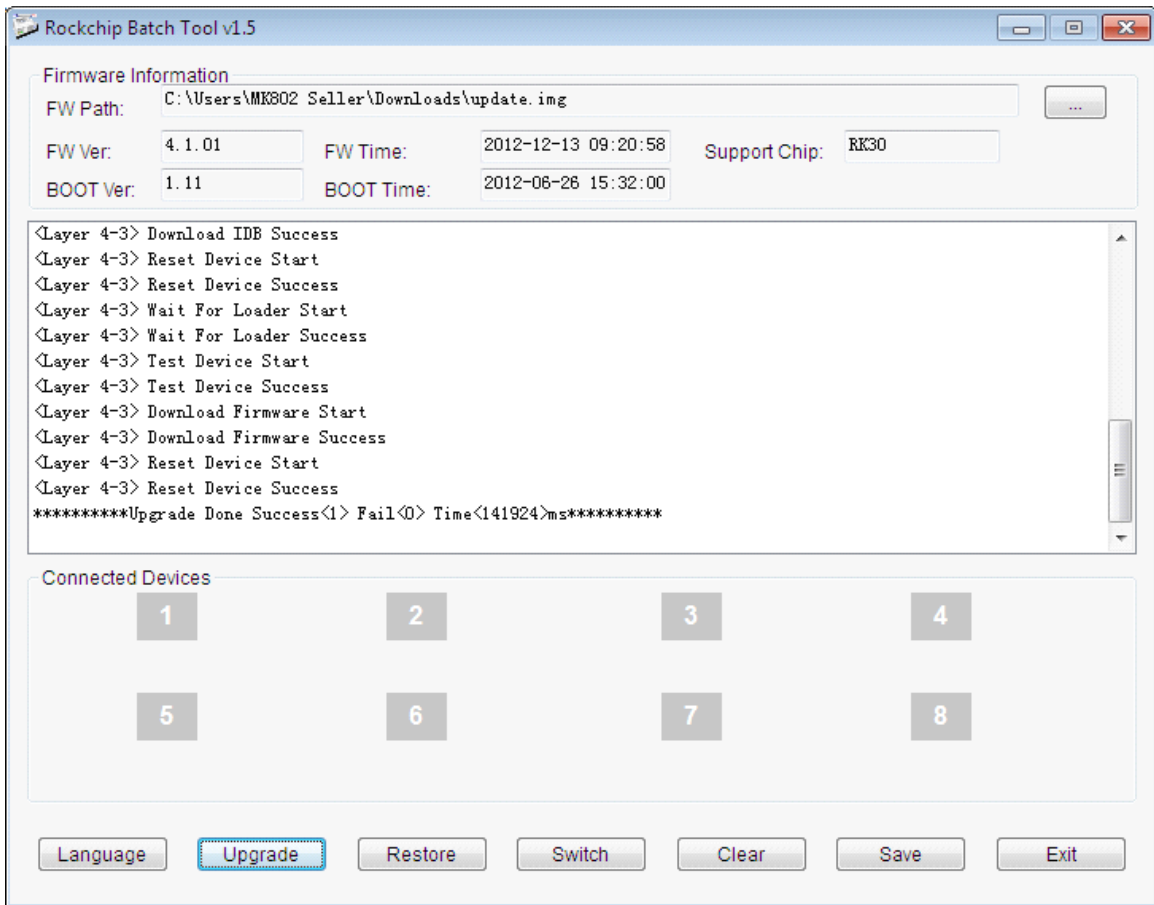
You will see the box turn to blue.

Click Upgrade button to start the firmware update.





Updating.



Update successfully.